

# OUTPERFORMING EXPECTATIONS

## HEAVY DUTY MEETS HIGH TECH

Bradyprinter™ PR Plus Printer (BBP PR+) is a heavy duty, high-volume industrial printer, designed to perform well in industrial environments. This printer prints sharp, professional, cost-effective labels for heat-shrinkable wire markers, thick tags and other difficult to print materials - perfect for applications where the materials need to have a long lifespan.

- Available in both 300 dpi or ultra-sharp 600 dpi printing
- Adjustable printhead heat settings for optimum print quality with Brady materials
- Fast print speed – up to 9.8 inches per second
- Ability to print on small labels down to 0.16" label size with tight registration
- Ultra-durable metal construction for rugged and dependable long life performance
- Simplified maintenance with field-installable parts and on-board "one-tool"
- Easy-to-read (graphic and alphanumeric) LCD menu display with convenient navigator pad and backlit graphic display for fast, easy access to menu options



**BRADYPRINTER™**  
PR PLUS PRINTER

## BRADYPRINTER™ PR PLUS (BBP PR+) PRINTER SPECIFICATIONS

	Bradyprinter™ PR 300 Plus	Bradyprinter™ PR 360 Plus	Bradyprinter™ PR 600 Plus
Catalog #	BP PR 300+	BP PR 360+	BP PR 600+
Printing Method	Thermal Heat Transfer	Thermal Heat Transfer	Thermal Heat Transfer
Resolution	300 dpi	300 dpi	600 dpi
Print Speed	Up to 9.8"/s	Up to 9.8"/s	Up to 9.8"/s
Min Label Width	1"	2"	1"
Max Label Width	4.7"	7.06"	4.7"
Min Label Length	0.2"	0.2"	0.2"
Min Label Dimension	0.125"	0.125"	0.125"
Max Print Width	4.16"	6.5"	4.16"
Max Print Length	78"	78"	78"
Min Liner Width	1"	1"	1"
Dimensions (H) x (W) x (L)	10.8" x 9.5" x 17.6"	10.8" x 11.9" x 17.6"	10.8" x 9.5" x 17.6"
Weight	9kg	13kg	9kg
Recommended Throughput	7000 labels / day	7000 labels / day	7000 labels / day
Media Width	1" - 4.7"	2" - 7.06"	1" - 4.7"
Memory	64MB	64MB	64MB
Compatible Software	Labelmark™ Software, Codesoft™ Software	Labelmark™ Software, Codesoft™ Software	Labelmark™ Software, Codesoft™ Software
Interface	Standard: Serial, USB, Ethernet 10/100	Standard: Serial, USB, Ethernet 10/100	Standard: Serial, USB, Ethernet 10/100
PC Connect or Stand Alone	PC Connect	PC Connect	PC Connect

## Application



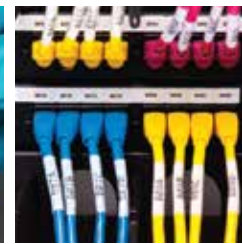
PermaSleeve®  
Wire Marking Sleeves



Electronics Labels



Laboratory Labels



Wire & Cable Labels



Raised Panel Labels



Security Labels



Asset / General  
Identification Labels



Barcode Labels

## Industry

- Electrical
- Rail
- Mass Transit
- Aerospace
- Data Communications
- Military



## CONTACT US

Brady's global presence makes it easy for you to do business with us wherever you are.

For enquires, please visit us at [www.bradyid.com.sg](http://www.bradyid.com.sg) or email us at [ContactUs\\_SA@bradycorp.com](mailto:ContactUs_SA@bradycorp.com).

**AUSTRALIA** (612) 8717 6300  
**CHINA** (86) 21 6100 6588  
**HONG KONG** (852) 2216 9283  
**INDIA** (91) 80 66582 900  
**INDONESIA** (65) 6477 7261  
**JAPAN** (81) 042 655 2535  
**MALAYSIA** (60) 4 810 1688

**PHILIPPINES** (65) 6477 7261  
**SINGAPORE** (65) 6477 7261  
**SOUTH KOREA** (02) 2192 0700  
**TAIWAN** (86) 2 2657 6108  
**THAILAND** (66) 2 515 2400  
**VIETNAM** (65) 6477 7261